

INTERNATIONAL STANDARD

IEC
60874-14-5

QC 910004XX0005

First edition
1997-06

Connectors for optical fibres and cables –

Part 14-5:

**Detail specification for fibre optic connector
type SC-PC untuned terminated to single-mode
fibre type B1**



Reference number
IEC 60874-14-5: 1997(E)

Validité de la présente publication

Le contenu technique des publications de la CEI est constamment revu par la CEI afin qu'il reflète l'état actuel de la technique.

Des renseignements relatifs à la date de reconfirmation de la publication sont disponibles auprès du Bureau Central de la CEI.

Les renseignements relatifs à ces révisions, à l'établissement des éditions révisées et aux amendements peuvent être obtenus auprès des Comités nationaux de la CEI et dans les documents ci-dessous:

- **Bulletin de la CEI**
- **Annuaire de la CEI**
Publié annuellement
- **Catalogue des publications de la CEI**
Publié annuellement et mis à jour régulièrement

Terminologie

En ce qui concerne la terminologie générale, le lecteur se reportera à la CEI 60050: *Vocabulaire Electrotechnique International* (VEI), qui se présente sous forme de chapitres séparés traitant chacun d'un sujet défini. Des détails complets sur le VEI peuvent être obtenus sur demande. Voir également le dictionnaire multilingue de la CEI.

Les termes et définitions figurant dans la présente publication ont été soit tirés du VEI, soit spécifiquement approuvés aux fins de cette publication.

Symboles graphiques et littéraux

Pour les symboles graphiques, les symboles littéraux et les signes d'usage général approuvés par la CEI, le lecteur consultera:

- la CEI 60027: *Symboles littéraux à utiliser en électrotechnique*;
- la CEI 60417: *Symboles graphiques utilisables sur le matériel. Index, relevé et compilation des feuilles individuelles*;
- la CEI 60617: *Symboles graphiques pour schémas*;

et pour les appareils électromédicaux,

- la CEI 60878: *Symboles graphiques pour équipements électriques en pratique médicale*.

Les symboles et signes contenus dans la présente publication ont été soit tirés de la CEI 60027, de la CEI 60417, de la CEI 60617 et/ou de la CEI 60878, soit spécifiquement approuvés aux fins de cette publication.

Publications de la CEI établies par le même comité d'études

L'attention du lecteur est attirée sur les listes figurant à la fin de cette publication, qui énumèrent les publications de la CEI préparées par le comité d'études qui a établi la présente publication.

Validity of this publication

The technical content of IEC publications is kept under constant review by the IEC, thus ensuring that the content reflects current technology.

Information relating to the date of the reconfirmation of the publication is available from the IEC Central Office.

Information on the revision work, the issue of revised editions and amendments may be obtained from IEC National Committees and from the following IEC sources:

- **IEC Bulletin**
- **IEC Yearbook**
Published yearly
- **Catalogue of IEC publications**
Published yearly with regular updates

Terminology

For general terminology, readers are referred to IEC 60050: *International Electrotechnical Vocabulary* (IEV), which is issued in the form of separate chapters each dealing with a specific field. Full details of the IEV will be supplied on request. See also the IEC Multilingual Dictionary.

The terms and definitions contained in the present publication have either been taken from the IEV or have been specifically approved for the purpose of this publication.

Graphical and letter symbols

For graphical symbols, and letter symbols and signs approved by the IEC for general use, readers are referred to publications:

- IEC 60027: *Letter symbols to be used in electrical technology*;
- IEC 60417: *Graphical symbols for use on equipment. Index, survey and compilation of the single sheets*;
- IEC 60617: *Graphical symbols for diagrams*;

and for medical electrical equipment,

- IEC 60878: *Graphical symbols for electromedical equipment in medical practice*.

The symbols and signs contained in the present publication have either been taken from IEC 60027, IEC 60417, IEC 60617 and/or IEC 60878, or have been specifically approved for the purpose of this publication.

IEC publications prepared by the same technical committee

The attention of readers is drawn to the end pages of this publication which list the IEC publications issued by the technical committee which has prepared the present publication.

INTERNATIONAL STANDARD

IEC 60874-14-5

QC 910004XX0005

First edition
1997-06

Connectors for optical fibres and cables –

Part 14-5: Detail specification for fibre optic connector type SC-PC untuned terminated to single-mode fibre type B1

© IEC 1997 Droits de reproduction réservés — Copyright - all rights reserved

Aucune partie de cette publication ne peut être reproduite ni utilisée sous quelque forme que ce soit et par aucun procédé, électronique ou mécanique, y compris la photocopie et les microfilms, sans l'accord écrit de l'éditeur.

No part of this publication may be reproduced or utilized in any form or by any means, electronic or mechanical, including photocopying and microfilm, without permission in writing from the publisher.

International Electrotechnical Commission
Telefax: +41 22 919 0300

3, rue de Varembe Geneva, Switzerland
e-mail: inmail@iec.ch IEC web site <http://www.iec.ch>



Commission Electrotechnique Internationale
International Electrotechnical Commission
Международная Электротехническая Комиссия

CODE PRIX
PRICE CODE

P

*Pour prix, voir catalogue en vigueur
For price, see current catalogue*

INTERNATIONAL ELECTROTECHNICAL COMMISSION



CONNECTORS FOR OPTICAL FIBRES AND CABLES –

Part 14-5: Detail specification for fibre optic connector type SC-PC
untuned terminated to single-mode fibre type B1

FOREWORD

- 1) The IEC (International Electrotechnical Commission) is a worldwide organization for standardization comprising all national electrotechnical committees (IEC National Committees). The object of the IEC is to promote international co-operation on all questions concerning standardization in the electrical and electronic fields. To this end and in addition to other activities, the IEC publishes International Standards. Their preparation is entrusted to technical committees; any IEC National Committee interested in the subject dealt with may participate in this preparatory work. International, governmental and non-governmental organizations liaising with the IEC also participate in this preparation. The IEC collaborates closely with the International Organization for Standardization (ISO) in accordance with conditions determined by agreement between the two organizations.
- 2) The formal decisions or agreements of the IEC on technical matters express, as nearly as possible, an international consensus of opinion on the relevant subjects since each technical committee has representation from all interested National Committees.
- 3) The documents produced have the form of recommendations for international use and are published in the form of standards, technical reports or guides and they are accepted by the National Committees in that sense.
- 4) In order to promote international unification, IEC National Committees undertake to apply IEC International Standards transparently to the maximum extent possible in their national and regional standards. Any divergence between the IEC Standard and the corresponding national or regional standard shall be clearly indicated in the latter.
- 5) The IEC provides no marking procedure to indicate its approval and cannot be rendered responsible for any equipment declared to be in conformity with one of its standards.
- 6) Attention is drawn to the possibility that some of the elements of this International Standard may be the subject of patent rights. The IEC shall not be held responsible for identifying any or all such patent rights.

International Standard IEC 60874-14-5 has been prepared by subcommittee 86B: Fibre optic interconnecting devices and passive components, of IEC technical committee 86: Fibre optics.

The text of this standard is based on the following documents:

FDIS	Report on voting
86B/875/FDIS	86B/1004/RVD

Full information on the voting for the approval of this standard can be found in the report on voting indicated in the above table.

The QC number that appears on the front cover of this publication is the specification number in the IEC Quality Assessment System for Electronic Components (IECQ).

The references to clauses or subclauses of IEC 60874-1 indicated in this part apply to the third edition of IEC 60874-1.

CONNECTORS FOR OPTICAL FIBRES AND CABLES	
Part 14-5: Detail specification for fibre optic connector type SC-PC untuned terminated to single-mode fibre type B1	
NATIONAL STANDARDS ORGANIZATION: Date:
DETAIL SPECIFICATION IEC QC 910004XX0005. FIBRE OPTIC COMPONENT OF ASSESSED QUALITY IN ACCORDANCE WITH <ul style="list-style-type: none"> • GENERIC SPECIFICATION: QC 910000 (IEC 60874-1) • BLANK DETAIL SPECIFICATION: QC 910001 (IEC 60874-1-1) CONNECTOR SET FOR OPTICAL FIBRES AND CABLES	
CLASSIFICATION: Type: Name: SC For use in datacom applications as specified in ISO/IEC International Standard 11801: "Generic cabling for customer premises" Configuration: plug-adaptor-plug Coupling: push-pull Control dimensions: – Plug: see figures 1, 2 and 3 – Adaptor: see IEC 60874-14-3 Arrangement: patchcord arrangement Style: Fibre retention: as required Cable retention: as required Optical coupling: butting Alignment: resilient sleeve alignment Variants: see page 7 Climatic category: 10/60/4 Environmental category: 4 Assessment level: A	
QUALIFICATION PROCEDURE: Fixed sample procedure	
SAFETY WARNING: Take care when handling small diameter optical fibre to prevent puncturing the skin, especially in the eye area. Direct viewing of the end of an optical fibre when it is propagating energy is not recommended unless prior assurance is obtained as to the safe energy output level.	
Applicable fibre cable information	
Mode field diameter	In accordance with IEC 60793-2
Cladding diameter	In accordance with IEC 60793-2
Core/cladding concentricity error	In accordance with IEC 60793-2
Buffer diameter	250 ± 15, 500 ± 30, 900 ± 50 µm
Jacket outer diameter	As required per variant
Fibre cut-off wavelength	1 100 – 1 280 nm
Additional information	
– Attenuation in random connection: less than 0,80 dB (95 % probability) less than 0,40 dB (average)	

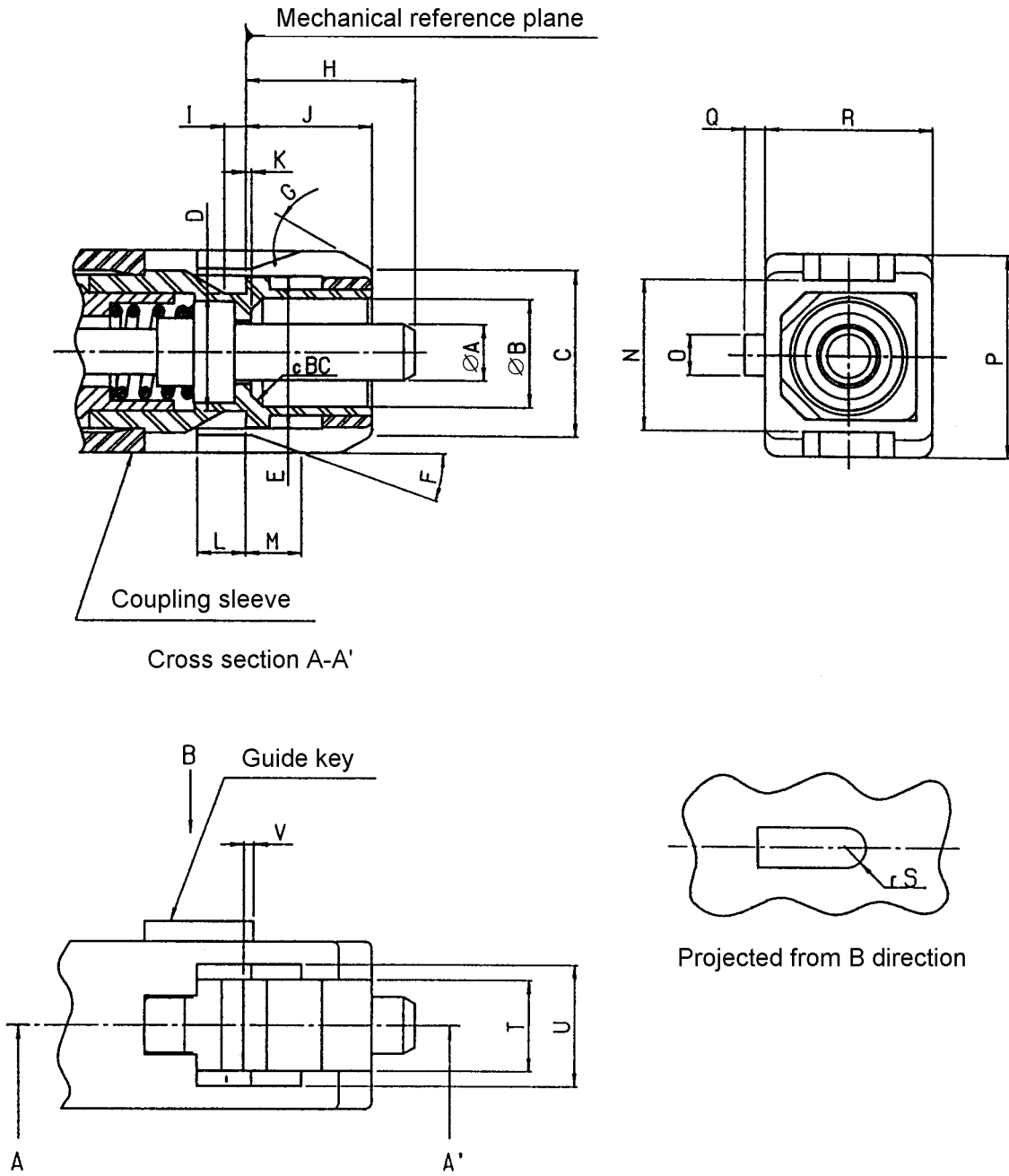


Figure 1 – Plug mating face dimensions

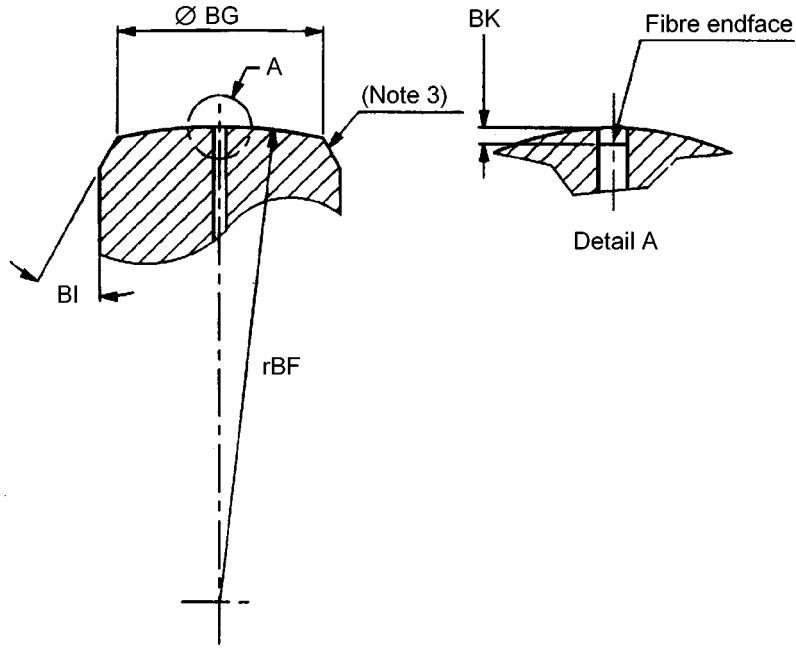
IEC 658/97

Reference	Dimensions		Notes
	Minimum	Maximum	
A	2,4985 mm	2,4995 mm	
B	4,8 mm	4,9 mm	
C	6,8 mm	7,4 mm	
D	4,9 mm	5,3 mm	
E	6,7 mm	6,8 mm	
F	19°	23°	
G	25°	35°	
H	7,15 mm	7,50 mm	1, 2
I	0,8 mm	1,2 mm	
J	5,3 mm	5,5 mm	
K	-0,1 mm	0,05 mm	3
L	2,11 mm	2,5 mm	
M	2,0 mm	2,8 mm	
N	6,6 mm	6,8 mm	
O	1,6 mm	1,8 mm	
P	8,89 mm	8,99 mm	
Q	0,8 mm	1,0 mm	
R	7,29 mm	7,39 mm	
rS	0,8 mm	0,9 mm	Radius
T	4,05 mm	4,15 mm	
U	5,4 mm	5,6 mm	
V	0 mm	0,5 mm	
cBC	0 mm	0,5 mm	Chamfer

NOTES

- Ferrule compression force shall be from 7,8 N to 11,8 N, when the ferrule is compressed to a point where H is $7 \pm 0,1$ mm.
- This value shows the dimension after the ferrule is polished and in the unmated condition.
- The negative dimension indicates that the position of the inside bottom plane is left-direction relative to the mechanical reference plane.
- Where a tolerance of form is not specified, the limits of the dimensions for a feature control the form as well as the size.
- Where interrelated features of size (features shown with a common axis or centre plane) have no geometric tolerance of location or run out specified, the limits of the dimensions for a feature control the location tolerance as well as the size.
- Where perpendicular features (features shown at right angles) have no geometric tolerance of orientation or run out specified, the limits of the dimensions for a feature control the orientation tolerance as well as the size.

Figure 1 – Plug mating face dimensions (continued)

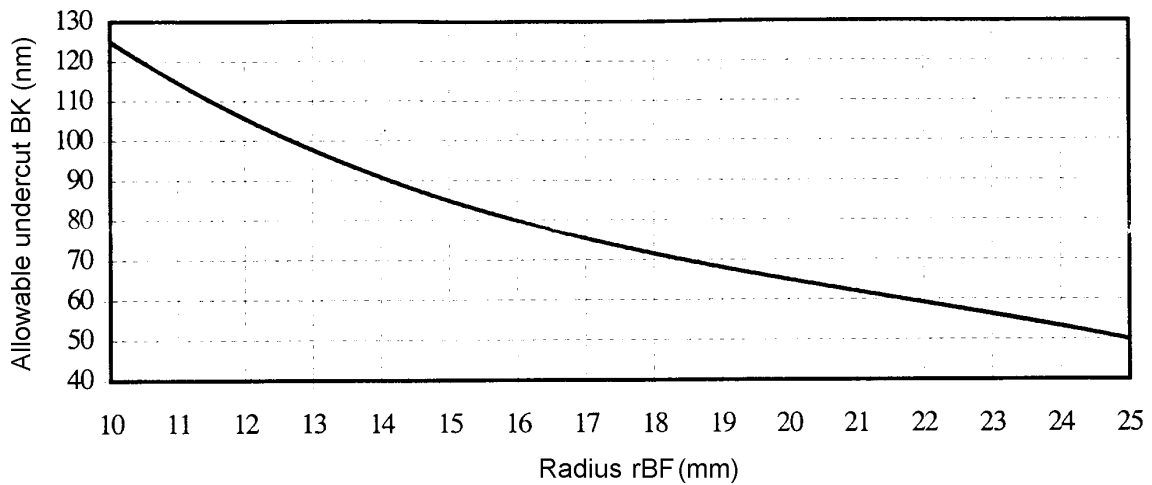


Reference	Dimensions		Notes
	Minimum	Maximum	
rBF	10 mm	25 mm	1, radius
BK	-0,0001 mm	see graph	2
BG	1,76 mm	2,26 mm	diameter, 4
BG	1,90 mm	2,26 mm	diameter, 5
BI	25°	35°	

NOTES

- 1 Eccentricity of a spherical polished ferrule endface is less than 50 µm.
- 2 The negative dimension refers to the fibre protrusion.
- 3 Break edge.
- 4 This value is applicable to the variant numbers 1001, 1003, 1005 and 1007.
- 5 This value is applicable to the variant numbers 1002, 1004, 1006 and 1008.

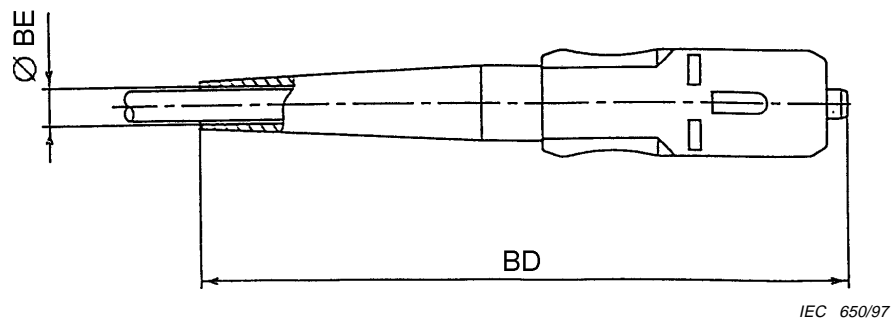
Figure 2a – Ferrule endface geometry after termination



Allowable undercut = $-0,02 \cdot \text{Radius}^3 + 1,3 \cdot \text{Radius}^2 - 31 \cdot \text{Radius} + 325$

IEC 649/97

Figure 2b – Allowable undercut BK versus radius rBF



Reference	Dimensions mm		Notes
	Minimum	Maximum	
BD		60	
BE	2,2		1
BE	2,6		2
BE	2,9		3
BE	3,2		4

NOTES

- 1 This value is applicable to the variants number -1001 and -1002.
- 2 This value is applicable to the variants number -1003 and -1004.
- 3 This value is applicable to the variants number -1005 and -1006.
- 4 This value is applicable to the variants number -1007 and -1008.

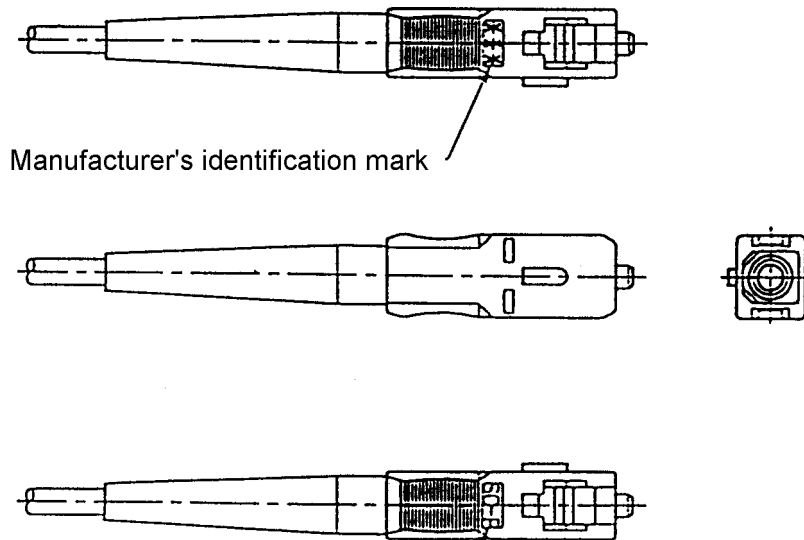
Figure 3 – Plug dimension

VARIANT IDENTIFICATION NUMBERS				
Number: QC 910X01/0005-ZZZZ				
ZZZZ	Component name	Variant feature		
		Applicable cable jacket diameter	Ferrule material	Dimension BG
1001	Plug	2,0 mm	Zirconia	1, 76 – 2,26
1002	Plug	2,0 mm	Zirconia	1, 90 – 2, 26
1003	Plug	2,4 mm	Zirconia	1, 76 – 2,26
1004	Plug	2,4 mm	Zirconia	1, 90 – 2, 26
1005	Plug	2,7 mm	Zirconia	1, 76 – 2,26
1006	Plug	2,7 mm	Zirconia	1, 90 – 2, 26
1007	Plug	3,0 mm	Zirconia	1, 76 – 2,26
1008	Plug	3,0 mm	Zirconia	1, 90 – 2, 26

SUPPLEMENTARY INFORMATION

Preferred colour:
 Colour of the coupling sleeve and boot shall be blue according to: RAL 5015.

Component marking:
 The name and/or manufacturer's identification mark may be permanently identified. Figure 4 shows an example of the location of the component marking.



IEC 659/97

Figure 4 – Example of component marking

TABLE 1 FIXED SAMPLE TEST SCHEDULE FOR QUALIFICATION APPROVAL		
Test sequence	Reference IEC 60874-1 (IEC 61300)	<i>n</i>
Group 0 – Visual examination – Dimensions – Ferrule compression force	4.4.1 (3-1) 4.4.2 (3-1) 4.4.12 (3-22)	20
Group 1 – Attenuation – Return loss	4.4.7 (3-4) 4.4.12 (3-6)	20
Group 2 – Cold – Dry heat – Damp heat (steady state)	4.5.17 (2-17) 4.5.18 (2-18) 4.5.19 (2-19)	6
Group 3 – Drop – Engagement and separation force – Mechanical endurance	4.5.14 (2-12) 4.4.5 (3-11) 4.5.32 (2-2)	6
Group 4 – Vibration – Change of temperature (test Nb)	4.5.1 (2-1) 4.5.22 (2-22)	4
Group 5 – Strength of coupling mechanism – Cable pulling – Cable torsion	4.5.6 (2-6) 4.5.4 (2-4) 4.5.5 (2-5)	4
Group 6 – Fibre or ferrule retention	4.5.2 (2-4)	NA
<p>NOTES</p> <p>1 <i>n</i> = sample size (number of plugs).</p> <p>2 To satisfy the qualification approval requirements of the detail specification there shall be no failures of any in the sample groups for any test parameter. If a failure does occur this shall be investigated and the cause of failure identified and corrected. The test which is affected shall then be repeated using the minimum sample size stated in this detail specification.</p> <p>A fully documented test report and supporting data shall be prepared and shall be available for inspection. Failures and the corrective action taken to eliminate failures shall be documented and evidence shall be presented to show that the corrective action will have no detrimental effect on the performance in any of the other tests. Design changes, as opposed to improvements in quality control, will usually be deemed to necessitate a repeat of the full qualification programme.</p> <p>3 Unless otherwise indicated, the test details, measurements and performance requirements are given in table 4.</p> <p>4 Only group 1 tests shall be carried out using a reference connector. All other tests shall be carried out using the samples from the relevant group at random.</p>		

TABLE 2			
LOT-BY-LOT QUALITY CONFORMANCE INSPECTION SCHEDULE			
GROUPS A AND B			
Test sequence	Reference IEC 60874-1 (IEC 61300)	Assessment level A	
		IL	AQL
Group A			
– Visual examination	4.4.1 (3-1)	II	4 %
Radius	4.4.2 (3-1)		
Undercut/Protrusion	(3-23)		
Eccentricity of spherical polished endface	(3-25)		
Group B			
– Attenuation	4.4.7 (3-4)	II	4 %
– Return loss	4.4.12 (3-6)		
<p>NOTES</p> <p>1 Unless otherwise indicated, the details, measurements and performance requirements are given in table 4.</p> <p>2 IL = Inspection level; AQL = Acceptable quality level.</p> <p>3 Only group B tests shall be carried out using a reference connector. All other tests shall be carried out using the samples from the relevant group at random.</p>			

TABLE 3			
PERIODIC QUALITY CONFORMANCE INSPECTION SCHEDULE			
GROUPS C AND D			
Test sequence	Reference IEC 60874-1 (IEC 61300)	Assessment level A	
		<i>n</i>	<i>p</i>
Group C0			
- Visual examination	4.4.1 (3-1)	18	24
- Dimensions	4.4.2 (3-1)		
- Ferrule compression force	4.4.12 (3-22)		
Group C1			
- Attenuation	4.4.7 (3-4)	18	24
- Return loss	4.4.12 (3-6)		
Group C2			
- Cold	4.5.17 (2-17)	6	24
- Dry heat	4.5.18 (2-18)		
- Damp heat (steady state)	4.5.19 (2-19)		
Group D0			
- Visual examination	4.4.1 (3-1)	20	48
- Dimensions	4.4.2 (3-1)		
- Ferrule compression force	4.4.12 (3-22)		
Group D1			
- Attenuation	4.4.7 (3-4)	20	48
- Return loss	4.4.12 (3-6)		
Group D2			
- Cold	4.5.17 (2-17)	6	48
- Dry heat	4.5.18 (2-18)		
- Damp heat (steady state)	4.5.19 (2-19)		
Group D3			
- Drop	4.5.14 (2-12)	6	48
- Engagement and separation force	4.4.5 (3-11)		
- Mechanical endurance	4.5.2 (2-2)		
Group D4			
- Vibration	4.5.1 (2-1)	4	48
- Change of temperature (test Nb)	4.5.22 (2-22)		
Group D5			
- Strength of coupling mechanism	4.5.6 (2-6)	4	48
- Cable pulling	4.5.4 (2-4)		
- Cable torsion	4.5.5 (2-5)		
Group D6			
- Fibre or ferrule retention	4.5.2 (2-4)	NA	NA
NOTES			
1 Unless otherwise indicated, the details, measurements and performance requirements are given in table 4.			
2 To satisfy the qualification approval requirements of the detail specification there shall be no failures of any in the sample groups for any test parameter. If a failure does occur this shall be investigated and the cause of failure identified and corrected. The test which is affected shall then be repeated using the minimum sample size stated in this detail specification.			
A fully documented test report and supporting data shall be prepared and shall be available for inspection. Failures and the corrective action taken to eliminate failures shall be documented and evidence shall be presented to show that the corrective action will have no detrimental effect on the performance in any of the other tests. Design changes, as opposed to improvements in quality control, will usually be deemed to necessitate a repeat of the full qualification programme.			
3 <i>n</i> = sample size (number of plugs); <i>p</i> = periodicity in months.			
4 Only group C1 and D1 tests shall be carried out using a reference connector. All other tests shall be carried out using the samples from the relevant group at random.			

TABLE 4
DETAILS, MEASUREMENTS AND PERFORMANCE REQUIREMENTS
<p><i>Visual examination 4.4.1 (61300-3-1)</i></p> <p>Requirements:</p> <ul style="list-style-type: none"> - Marking shall be clear - Coupling sleeve shall be movable smoothly
<p><i>Dimensions 4.4.2 (61300-3-1)</i></p> <p>Requirements:</p> <ul style="list-style-type: none"> - All size dimensions shall be in accordance with this specification
<p><i>Attenuation 4.4.7 (61300-3-4)</i></p> <p>Details:</p> <ul style="list-style-type: none"> - Method No. 7 - Definitions of reference plug are as follows: <ul style="list-style-type: none"> • Ferrule outer diameter is $2,499 \pm 0,0003$ mm • Concentricity of the fibre core with the outer diameter of the ferrule is less than $0,6 \mu\text{m}$ • Eccentricity of a spherical polished ferrule endface is less than $30 \mu\text{m}$ - Adaptor shall be in accordance with IEC 60874-14-3 - Number of measurements to be averaged: 5 - Source: LD. - Peak wavelength: $1,3 \mu\text{m}$ - Preconditioning procedure: clean ferrule endface and alignment sleeve using lint free material - Recovery procedure: none <p>Requirements:</p> <ul style="list-style-type: none"> - Allowable attenuation: less than 0,5 dB against reference plug using reference adaptor
<p><i>Return loss 4.4.12 (61300-3-6)</i></p> <p>Details:</p> <ul style="list-style-type: none"> - Method 3 - Source: LD - Peak wavelength: $1,3 \mu\text{m}$ - Adaptor shall be in accordance with IEC 60874-14-3 - Preconditioning procedure: clean ferrule endface and alignment sleeve using lint free material - Recovery procedure: none <p>Requirements:</p> <ul style="list-style-type: none"> - Allowable return loss: more than 26 dB
<p><i>Cold 4.5.17 (61300-2-17)</i></p> <p>Details:</p> <ul style="list-style-type: none"> - Temperature: $-10 \text{ }^\circ\text{C}$ - Duration: 96 h - Specimen optically functioning - Conditioning procedure: specimen lowered to test temperature and returned to room temperature at a rate not to exceed $1^\circ/\text{min}$ - Deviations: none - Adaptor shall be in accordance with IEC 60874-14-3 - Monitoring method of attenuation and return loss shall be in accordance with IEC 61300-3-20 - Preconditioning procedure: clean ferrule endface and alignment sleeve using lint free material - Recovery procedure: after testing, specimens shall be maintained at room temperature condition for 2 h. Clean ferrule endface and alignment sleeve using lint free material before final measurement. <p>Initial measurements and performance requirements:</p> <ul style="list-style-type: none"> - Attenuation: less than 0,75 dB - Return loss: more than 26 dB <p>Measurements and performance requirements during test:</p> <ul style="list-style-type: none"> - Attenuation: less than 0,75 dB - Change in attenuation: less than 0,2 dB - Return loss: more than 26 dB <p>Final measurements and performance requirements:</p> <ul style="list-style-type: none"> - Attenuation: less than 0,75 dB - Change in attenuation: less than 0,2 dB - Return loss: more than 26 dB

(continued)

TABLE 4 (continued) DETAILS, MEASUREMENTS AND PERFORMANCE REQUIREMENTS
<p><i>Dry heat</i> 4.5.18 (61300-2-18)</p> <p>Details:</p> <ul style="list-style-type: none"> – Temperature: 60 °C – Duration: 96 h – Specimen optically functioning – Conditioning procedure: specimen raised to test temperature and returned to room temperature at a rate not to exceed 1°/min – Deviations: none – Adaptor shall be in accordance with IEC 60874-14-3 – Monitoring method of attenuation and return loss shall be in accordance with IEC 61300-3-20 – Preconditioning procedure: clean ferrule endface and alignment sleeve using lint free material – Recovery procedure: after testing, specimens shall be maintained at room temperature condition for 2 h. Clean ferrule endface and alignment sleeve using lint free material before final measurement <p>Initial measurements and performance requirements:</p> <ul style="list-style-type: none"> – Attenuation: less than 0,75 dB – Return loss: more than 26 dB <p>Measurements and performance requirements during test:</p> <ul style="list-style-type: none"> – Attenuation: less than 0,75 dB – Change in attenuation: less than 0,2 dB – Return loss: more than 26 dB <p>Final measurements and performance requirements:</p> <ul style="list-style-type: none"> – Attenuation: less than 0,75 dB – Change in attenuation: less than 0,2 dB – Return loss: more than 26 dB
<p><i>Damp heat (steady state)</i> 4.5.19 (61300-2-19)</p> <p>Details:</p> <ul style="list-style-type: none"> – Temperature: 40 °C – Relative humidity: 90-95 % – Duration: 96 h – Precautions regarding surface moisture removal: none – Specimen optically functioning – Conditioning procedure: specimen raised to test temperature and returned to room temperature at a rate not to exceed 1°/min – Deviations: none – Adaptor shall be in accordance with IEC 60874-14-3 – Monitoring method of attenuation and return loss shall be in accordance with IEC 61300-3-20 – Preconditioning procedure: clean ferrule endface and alignment sleeve using lint free material – Recovery procedure: after testing, specimens shall be maintained at room temperature condition for 2 h. Clean ferrule endface and alignment sleeve using lint free material before final measurement <p>Initial measurements and performance requirements:</p> <ul style="list-style-type: none"> – Attenuation: less than 0,75 dB – Return loss: more than 26 dB <p>Measurements and performance requirements during test:</p> <ul style="list-style-type: none"> – Attenuation: less than 0,75 dB – Change in attenuation: less than 0,2 dB – Return loss: more than 26 dB <p>Final measurements and performance requirements:</p> <ul style="list-style-type: none"> – Attenuation: less than 0,75 dB – Change in attenuation: less than 0,2 dB – Return loss: more than 26 dB

(continued)

TABLE 4 (continued) DETAILS, MEASUREMENTS AND PERFORMANCE REQUIREMENTS
<p><i>Cable pulling</i> 4.5.4 (61300-2-4)</p> <p>Details:</p> <ul style="list-style-type: none"> - Magnitude: 90 N - Rate of application of the tensile load: 50N/min < load rate < 250 N/min - Point of application of the tensile load: 22-28 cm from the connector - Specimen optically non-functioning - Preconditioning procedure: clean ferrule endface and alignment sleeve using lint free material - Recovery procedure: none - Deviations: none - Adaptor shall be in accordance with IEC 60874-14-3 <p>Initial measurements and performance requirements:</p> <ul style="list-style-type: none"> - Attenuation: less than 0,75 dB - Return loss: more than 26 dB <p>Final measurements and performance requirements:</p> <ul style="list-style-type: none"> - Attenuation: less than 0,75 dB - Change in attenuation: less than 0,2 dB - Return loss: more than 26 dB - The specimen has no mechanical damage
<p><i>Cable torsion</i> 4.5.5 (61300-2-5)</p> <p>Details:</p> <ul style="list-style-type: none"> - Tensile load: 1,5 kg (for the variants No. -1001 and 1002) 2,5 kg (for the variants No. -1003 to 1008) - Application of load: twist the cable 2,5 turns in one direction with specified load applied. Then twist it 5 turns in other direction and back 5 turns for 5 cycles - Point of application of the tensile load: 22-28 cm from the connector - Specimen optically non-functioning - Preconditioning procedure: clean ferrule endface and alignment sleeve using lint free material - Recovery procedure: none - Deviations: none - Adaptor shall be in accordance with IEC 60874-14-3 <p>Initial measurements and performance requirements:</p> <ul style="list-style-type: none"> - Attenuation: less than 0,75 dB - Return loss: more than 26 dB <p>Final measurements and performance requirements:</p> <ul style="list-style-type: none"> - Attenuation: less than 0,75 dB - Change in attenuation: less than 0,2 dB - Return loss: more than 26 dB - The specimen has no mechanical damage
<p><i>Strength of coupling mechanism</i> 4.5.6 (61300-2-6)</p> <p>Details:</p> <ul style="list-style-type: none"> - Magnitude: 68,6 N - Rate of application of the tensile load: 50 N/min < load rate < 250 N/min - Point of application of the tensile load: 22-28 cm from connector - Specimen optically non-functioning - Preconditioning procedure: clean ferrule endface and alignment sleeve using lint free material - Recovery procedure: clean ferrule endface and alignment sleeve using lint free material before final measurement - Deviations: none - Adaptor shall be in accordance with IEC 60874-14-3 <p>Initial measurements and performance requirements:</p> <ul style="list-style-type: none"> - Attenuation: less than 0,75 dB - Return loss: more than 26 dB <p>Final measurements and performance requirements:</p> <ul style="list-style-type: none"> - Attenuation: less than 0,75 dB - Change in attenuation: less than 0,2 dB - Return loss: more than 26 dB - The specimen has no mechanical damage

(continued)

TABLE 4 (continued) DETAILS, MEASUREMENTS AND PERFORMANCE REQUIREMENTS
<p><i>Mechanical endurance 4.5.32 (61300-2-2)</i></p> <p>Details:</p> <ul style="list-style-type: none"> – Cycles: 500 – Specimen optically functioning – Preconditioning procedure: clean ferrule endface and alignment sleeve using lint free material – Recovery procedure: clean ferrule endface and alignment sleeve using lint free material after 25 matings – Deviations: none – Adaptor shall be in accordance with IEC 60874-14-3 <p>Initial measurements and performance requirements:</p> <ul style="list-style-type: none"> – Attenuation: less than 0,75 dB – Return loss: more than 26 dB <p>Measurements and performance requirements during test:</p> <ul style="list-style-type: none"> – Attenuation: less than 0,75 dB – Change in attenuation: less than 0,2 dB – Return loss: more than 26 dB <p>Final measurements and performance requirements:</p> <ul style="list-style-type: none"> – Attenuation: less than 0,75 dB – Change in attenuation: less than 0,2 dB – Return loss: more than 26 dB
<p><i>Ferrule compression force (61300-3-22)</i></p> <p>Details:</p> <ul style="list-style-type: none"> – Position of the ferrule endface relative to mechanical reference plane of the connector while ferrule compression force shall be measured: Dimension H (See figure 1) is $7 \pm 0,1$ mm <p>Requirements:</p> <ul style="list-style-type: none"> – Allowable ferrule compression force: 7,8-11,8 N
<p><i>Drop 4.5.14 (61300-2-12)</i></p> <p>Details:</p> <ul style="list-style-type: none"> – Method: A – Number of drops: 5 – Drop height: 1 000 mm – Specimen optically non-functioning – Preconditioning procedure: clean ferrule endface and alignment sleeve using lint free material. The plug shall be with dust cap – Recovery procedure: clean ferrule endface and alignment sleeve using lint free material before final measurement – Deviation: none – Adaptor shall be in accordance with IEC 60874-14-3 <p>Initial measurements and performance requirements:</p> <ul style="list-style-type: none"> – Attenuation: less than 0,75 dB – Return loss: more than 26 dB <p>Final measurements and performance requirements:</p> <ul style="list-style-type: none"> – Attenuation: less than 0,75 dB – Change in attenuation: less than 0,2 dB – Return loss: more than 26 dB – The specimen has no mechanical damage
<p><i>Engagement and separation force 4.5.4 (61300-3-11)</i></p> <p>Details:</p> <ul style="list-style-type: none"> – Preconditioning procedure: none – Deviation: as necessary – Adaptor shall be in accordance with IEC 60874-14-3 <p>Requirements:</p> <ul style="list-style-type: none"> – Allowable engagement force: max. 19,6 N – Allowable separation force: max. 19,6 N

(continued)

TABLE 4 (concluded) DETAILS, MEASUREMENTS AND PERFORMANCE REQUIREMENTS
<p><i>Change of temperature (test Nb) 4.5.22 (61300-2-22)</i></p> <p>Details:</p> <ul style="list-style-type: none"> - Test method: Nb - High temperature: 60 °C - Low temperature: -10 °C - Duration of extreme temperature: 30 min - Changeover time: 0,5 min - Number of cycles: 5 - Specimen optically functioning - Preconditioning procedure: clean ferrule endface and alignment sleeve using lint free material - Recovery procedure: after tests, specimens shall be maintained at room temperature condition for 2 h. Clean ferrule endface and alignment sleeve using lint free material. - Deviation: none - Adaptor shall be in accordance with IEC 60874-14-3 - Monitoring method of attenuation and return loss shall be in accordance with IEC 61300-3-20 <p>Initial measurements and performance requirements:</p> <ul style="list-style-type: none"> - Attenuation: less than 0,75 dB - Return loss: more than 26 dB <p>Measurements and performance requirements during test:</p> <ul style="list-style-type: none"> - Attenuation: less than 0,75 dB - Change in attenuation: less than 0,2 dB - Return loss: more than 26 dB <p>Final measurements and performance requirements:</p> <ul style="list-style-type: none"> - Attenuation: less than 0,75 dB - Change in attenuation: less than 0,2 dB - Return loss: more than 26 dB
<p><i>Vibration 4.5.1 (61300-2-1)</i></p> <p>Details:</p> <ul style="list-style-type: none"> - Frequency range: 10-55 Hz - Vibration amplitude: 0,75 mm constant displacement - Sweep time: 1 octave/min - Endurance duration per axis: 30 min - Method of mounting: an adaptor shall be mounted rigidly to the mounting fixture - Specimen optically non-functioning - Preconditioning procedure: clean ferrule endface and alignment sleeve using lint free material - Recovery procedure: clean ferrule endface and alignment sleeve using lint free material before final measurement - Deviation: none - Adaptor shall be in accordance with IEC 60874-14-3 <p>Initial measurements and performance requirements:</p> <ul style="list-style-type: none"> - Attenuation: less than 0,75 dB - Return loss: more than 26 dB <p>Final measurements and performance requirements:</p> <ul style="list-style-type: none"> - Attenuation: less than 0,75 dB - Change in attenuation: less than 0,2 dB - Return loss: more than 26 dB - The specimen has no mechanical damage



Standards Survey

We at the IEC want to know how our standards are used once they are published.

The answers to this survey will help us to improve IEC standards and standard related information to meet your future needs

Would you please take a minute to answer the survey on the other side and mail or fax to:

Customer Service Centre (CSC)

International Electrotechnical Commission

3, rue de Varembé

Case postale 131

1211 Geneva 20

Switzerland

or

Fax to: CSC at +41 22 919 03 00

Thank you for your contribution to the standards making process.

A Prioritaire

Nicht frankieren
Ne pas affranchir



Non affrancare
No stamp required

RÉPONSE PAYÉE

SUISSE

Customer Service Centre (CSC)

International Electrotechnical Commission

3, rue de Varembé

Case postale 131

1211 GENEVA 20

Switzerland

1.
No. of IEC standard:
.....

2.
Tell us why you have the standard.
(check as many as apply). I am:
 the buyer
 the user
 a librarian
 a researcher
 an engineer
 a safety expert
 involved in testing
 with a government agency
 in industry
 other.....

3.
This standard was purchased from?
.....

4.
This standard will be used
(check as many as apply):
 for reference
 in a standards library
 to develop a new product
 to write specifications
 to use in a tender
 for educational purposes
 for a lawsuit
 for quality assessment
 for certification
 for general information
 for design purposes
 for testing
 other.....

5.
This standard will be used in conjunction
with (check as many as apply):
 IEC
 ISO
 corporate
 other (published by.....)
 other (published by.....)
 other (published by.....)

6.
This standard meets my needs
(check one)
 not at all
 almost
 fairly well
 exactly

7.
Please rate the standard in the following
areas as (1) bad, (2) below average,
(3) average, (4) above average,
(5) exceptional, (0) not applicable:

- clearly written
- logically arranged
- information given by tables
- illustrations
- technical information

8.
I would like to know how I can legally
reproduce this standard for:
 internal use
 sales information
 product demonstration
 other.....

9.
In what medium of standard does your
organization maintain most of its
standards (check one):
 paper
 microfilm/microfiche
 mag tapes
 CD-ROM
 floppy disk
 on line

9A.
If your organization currently maintains
part or all of its standards collection in
electronic media, please indicate the
format(s):
 raster image
 full text

10.
In what medium does your organization
intend to maintain its standards collection
in the future (check all that apply):
 paper
 microfilm/microfiche
 mag tape
 CD-ROM
 floppy disk
 on line

10A.
For electronic media which format will be
chosen (check one)
 raster image
 full text

11.
My organization is in the following sector
(e.g. engineering, manufacturing)
.....

12.
Does your organization have a standards
library:
 yes
 no

13.
If you said yes to 12 then how many
volumes:
.....

14.
Which standards organizations
published the standards in your
library (e.g. ISO, DIN, ANSI, BSI,
etc.):
.....

15.
My organization supports the
standards-making process (check as
many as apply):
 buying standards
 using standards
 membership in standards
organization
 serving on standards
development committee
 other.....

16.
My organization uses (check one)
 French text only
 English text only
 Both English/French text

17.
Other comments:
.....
.....
.....
.....
.....
.....

18.
Please give us information about you
and your company
name:
job title:.....
company:
address:.....
.....
.....
No. employees at your location:.....
turnover/sales:.....

Publications de la CEI préparées par le Comité d'Etudes n° 86

- 60793:— Fibres optiques.
- 60793-1 (1992) Partie 1: Spécification générique.
- 60793-1-1 (1995) Partie 1: Spécification générique – Section 1: Généralités.
- 60793-1-2 (1995) Partie 1: Spécification générique – Section 2: Méthodes de mesure des dimensions. Amendement 1 (1996).
- 60793-1-3 (1995) Partie 1: Spécification générique – Section 3: Méthodes de mesure des caractéristiques mécaniques. Amendement 1 (1996).
- 60793-1-4 (1995) Partie 1: Spécification générique – Section 4: Méthodes de mesure des caractéristiques optiques et de transmission. Amendement 1 (1996).
- 60793-1-5 (1995) Partie 1: Spécification générique – Section 5: Méthodes de mesure des caractéristiques d'environnement.
- 60793-2 (1992) Partie 2: Spécifications de produit. Amendement 1 (1995).
- 60794:— Câbles à fibres optiques.
- 60794-1 (1996) Partie 1: Spécification générique.
- 60794-2 (1989) Deuxième partie: Spécifications de produit.
- 60794-3 (1994) Partie 3: Câbles de télécommunication – Spécification intermédiaire.
- 60869:— Atténuateurs à fibres optiques.
- 60869-1 (1994) Partie 1: Spécification générique.
- 60869-1-1 (1994) Partie 1-1: Spécification particulière-cadre.
- 60874-0 (1988) Connecteurs pour fibres et câbles optiques. Partie zéro: Guide pour l'élaboration des spécifications intermédiaires.
- 60874-1 (1993) Partie 1: Spécification générique. Amendement 1 (1994).
- 60874-1-1 (1994) Partie 1-1: Spécification particulière cadre – Catégories d'environnement.
- 60874-2 (1993) Partie 2: Spécification intermédiaire pour connecteur pour fibres optiques – Type F-SMA.
- 60874-3 (1993) Partie 3: Spécification intermédiaire pour connecteur pour fibres optiques – Type CFO3.
- 60874-4 (1993) Partie 4: Spécification intermédiaire pour connecteur pour fibres optiques – Type CFO4.
- 60874-5 (1993) Partie 5: Spécification intermédiaire pour connecteur pour fibres optiques – Type BAM.
- 60874-6 (1993) Partie 6: Spécification intermédiaire pour connecteur pour fibres optiques – Type LSA.
- 60874-7 (1993) Partie 7: Spécification intermédiaire pour connecteur pour fibres optiques – Type FC.
- 60874-8 (1993) Partie 8: Spécification intermédiaire pour connecteur pour fibres optiques – Type D.
- 60874-9 (1993) Partie 9: Spécification intermédiaire pour connecteur pour fibres optiques de type OF-2.
- 60874-10 (1992) Partie 10: Spécification intermédiaire pour connecteur pour fibres optiques – Type BFOC/2,5.
- 60874-10-1 (1997) (Publiée en langue anglaise uniquement).
- 60874-10-2 (1997) (Publiée en langue anglaise uniquement).
- 60874-10-3 (1997) (Publiée en langue anglaise uniquement).
- 60874-11 (1993) Partie 11: Spécification intermédiaire pour connecteur pour fibres optiques – Type OCCA-PC.

(suite)

IEC publications prepared by Technical Committee No. 86

- 60793:— Optical fibres.
- 60793-1 (1992) Part 1: Generic specification.
- 60793-1-1 (1995) Part 1: Generic specification – Section 1: General.
- 60793-1-2 (1995) Part 1: Generic specification – Section 2: Measuring methods for dimensions. Amendment 1 (1996).
- 60793-1-3 (1995) Part 1: Generic specification – Section 3: Measuring methods for mechanical characteristics. Amendment 1 (1996).
- 60793-1-4 (1995) Part 1: Generic specification – Section 4: Measuring methods for transmission and optical characteristics. Amendment 1 (1996).
- 60793-1-5 (1995) Part 1: Generic specification – Section 5: Measuring methods for environmental characteristics.
- 60793-2 (1992) Part 2: Product specifications. Amendment 1 (1995).
- 60794:— Optical fibre cables.
- 60794-1 (1996) Part 1: Generic specification.
- 60794-2 (1989) Part 2: Product specifications.
- 60794-3 (1994) Part 3: Telecommunication cables – Sectional specification.
- 60869:— Fibre optic attenuators.
- 60869-1 (1994) Part 1: Generic specification.
- 60869-1-1 (1994) Part 1-1: Blank detail specification.
- 60874-0 (1988) Connectors for optical fibres and cables. Part 0: Guide for the construction of sectional specifications.
- 60874-1 (1993) Part 1: Generic specification. Amendment 1 (1994).
- 60874-1-1 (1994) Part 1-1: Blank detail specification – Environmental categories.
- 60874-2 (1993) Part 2: Sectional specification for fibre optic connector – Type F-SMA.
- 60874-3 (1993) Part 3: Sectional specification for fibre optic connector – Type CFO3.
- 60874-4 (1993) Part 4: Sectional specification for fibre optic connector – Type CFO4.
- 60874-5 (1993) Part 5: Sectional specification for fibre optic connector – Type BAM.
- 60874-6 (1993) Part 6: Sectional specification for fibre optic connector – Type LSA.
- 60874-7 (1993) Part 7: Sectional specification for fibre optic connector – Type FC.
- 60874-8 (1993) Part 8: Sectional specification for fibre optic connector – Type D.
- 60874-9 (1993) Part 9: Sectional specification for fibre optic connector – Type OF-2.
- 60874-10 (1992) Part 10: Sectional specification for fibre optic connector – Type BFOC/2,5.
- 60874-10-1 (1997) Part 10-1: Detail specification for fibre optic connector type BFOC/2,5 terminated to multimode fibre type A1.
- 60874-10-2 (1997) Part 10-2: Detail specification for fibre optic connector type BFOC/2,5 terminated to single-mode fibre type B1.
- 60874-10-3 (1997) Part 10-3: Detail specification for fibre optic adaptor type BFOC/2,5 for single and multimode fibre.
- 60874-11 (1993) Part 11: Sectional specification for fibre optic connector – Type OCCA-PC.

(continued)

**Publications de la CEI préparées
par le Comité d'Etudes n° 86 (suite)**

- 60874-12 (1993) Partie 12: Spécification intermédiaire pour connecteur pour fibres optiques – Type OCCA-BU.
- 60874-13 (1993) Partie 13: Spécification intermédiaire pour connecteur pour fibres optiques – Type CFO8.
- 60874-14 (1993) Partie 14: Spécification intermédiaire pour connecteur pour fibres optiques – Type SC.
- 60874-14-1 (1997) (Publiée en langue anglaise uniquement).
- 60874-14-2 (1997) (Publiée en langue anglaise uniquement).
- 60874-14-3 (1997) (Publiée en langue anglaise uniquement).
- 60874-14-4 (1997) (Publiée en langue anglaise uniquement).
- 60874-14-5 (1997) (Publiée en langue anglaise uniquement).
- 60874-14-6 (1997) (Publiée en langue anglaise uniquement).
- 60874-14-7 (1997) (Publiée en langue anglaise uniquement).
- 60874-15 (1994) Partie 15: Spécification intermédiaire pour connecteur pour fibres optiques – Type DS.
- 60874-16 (1994) Partie 16: Spécification intermédiaire pour connecteur pour fibres optiques – Type MT.
- 60874-17 (1995) Partie 17: Spécification intermédiaire pour connecteur pour fibres optiques – Type F-05 (verrouillage par friction).
- 60874-19 (1995) Partie 19: Spécification intermédiaire pour connecteur pour fibres optiques – Type SC-D(uplex).
- 60875:— Dispositifs de couplage pour fibres optiques.
- 60875-1 (1996) Partie 1: Spécification générique.
- 60875-1-1 (1996) Partie 1-1: Spécification particulière cadre.
- 60875-2 (1992) Partie 2: Spécification intermédiaire: Dispositifs de couplage ne dépendant pas de la longueur d'onde.
- 60875-3 (1992) Partie 3: Spécification intermédiaire: Dispositifs de couplage dépendant de la longueur d'onde.
- 60876:— Commutateurs à fibres optiques.
- 60876-1 (1994) Première partie: Spécification générique.
- 61073: — Epissures pour câbles et fibres optiques.
- 61073-1 (1994) Partie 1: Spécification générique – Matériel de montage et accessoires.
- 61073-2 (1993) Partie 2: Spécification intermédiaire de répartiteurs et boîtiers pour fibres et câbles optiques.
- 6173-3 (1993) Partie 3: Spécification intermédiaire – Epissures par fusion pour fibres et câbles optiques.
- 61073-4 (1994) Partie 4: Spécification intermédiaire – Epissures mécaniques pour fibres et câbles optiques.
- 61202: — Isolateurs pour fibres optiques.
- 61202-1 (1994) Partie 1: Spécification générique.
- 61202-1-1 (1994) Partie 1-1: Spécification particulière cadre.
- 61218 (1993) Fibres optiques – Guide de sécurité.
- 61269: — Jeux d'embouts pour fibres optiques.
- 61269-1 (1994) Partie 1: Spécification générique.
- 61269-1-1 (1994) Partie 1-1: Spécification particulière cadre.
- 61274: — Raccords pour fibres optiques.
- 61274-1 (1994) Partie 1: Spécification générique.
- 61274-1-1 (1994) Partie 1-1: Spécification particulière cadre.
- (suite)

**IEC publications prepared
by Technical Committee No. 86 (continued)**

- 60874-12 (1993) Part 12: Sectional specification for fibre optic connector – Type OCCA-BU.
- 60874-13 (1993) Part 13: Sectional specification for fibre optic connector – Type CFO8.
- 60874-14 (1993) Part 14: Sectional specification for fibre optic connector – Type SC.
- 60874-14-1 (1997) Part 14-1: Detail specification for fibre optic connector type SC-PC standard terminated to multimode fibre type A1a, A1b.
- 60874-14-2 (1997) Part 14-2: Detail specification for fibre optic connector type SC-PC tuned terminated to single-mode fibre type B1.
- 60874-14-3 (1997) Part 14-3: Detail specification for fibre optic adaptor (simplex) type SC for single-mode fibre.
- 60874-14-4 (1997) Part 14-4: Detail specification for fibre optic adaptor (simplex) type SC for multimode fibre.
- 60874-14-5 (1997) Part 14-5: Detail specification for fibre optic connector type SC-PC untuned terminated to single-mode fibre type B1.
- 60874-14-6 (1997) Part 14-6: Detail specification for fibre optic connector type SC-APC 9° untuned terminated to single-mode fibre type B1.
- 60874-14-7 (1997) Part 14-7: Detail specification for fibre optic connector type SC-APC 9° tuned terminated to single-mode fibre type B1.
- 60874-15 (1994) Part 15: Sectional specification for fibre optic connector – Type DS.
- 60874-16 (1994) Part 16: Sectional specification for fibre optic connector – Type MT.
- 60874-17 (1995) Part 17: Sectional specification for fibre optic connector – Type F-05 (friction lock).
- 60874-19 (1995) Part 19: Sectional specification for fibre optic connector – Type SC-D(uplex).
- 60875:— Fibre optic branching devices.
- 60875-1 (1996) Part 1: Generic specification.
- 60875-1-1 (1996) Part 1-1: Blank detail specification.
- 60875-2 (1992) Part 2: Sectional specification: Non-wavelength selective branching device.
- 60875-3 (1992) Part 3: Sectional specification: Wavelength selective branching devices.
- 60876:— Fibre optic switches.
- 60876-1 (1994) Part 1: Generic specification.
- 61073: — Splices for optical fibres and cables.
- 61073-1 (1994) Part 1: Generic specification – Hardware and accessories.
- 61073-2 (1993) Part 2: Sectional specification for splice organizer and closures for optical fibres and cables.
- 61073-3 (1993) Part 3: Sectional specification – Fusion splices for optical fibres and cables.
- 61073-4 (1994) Part 4: Sectional specification – Mechanical splices for optical fibres and cables.
- 61202: — Fibre optic isolators.
- 61202-1 (1994) Part 1: Generic specification.
- 61202-1-1 (1994) Part 1-1: Blank detail specification.
- 61218 (1993) Fibre optic – Safety guide.
- 61269: — Fibre optic terminus sets.
- 61269-1 (1994) Part 1: Generic specification.
- 61269-1-1 (1994) Part 1-1: Blank detail specification.
- 61274: — Fibre optic adaptors.
- 61274-1 (1994) Part 1: Generic specification.
- 61274-1-1 (1994) Part 1-1: Blank detail specification.
- (continued)

**Publications de la CEI préparées
par le Comité d'Études n° 86 (suite)**

- 61300:— Dispositifs d'interconnexion et composants passifs à fibres optiques – Méthodes fondamentales d'essais et de mesures.
- 61300-1 (1995) Partie 1: Généralités et guide.
- 61300-2-1 (1995) Partie 2-1: Essais – Vibrations (sinusoïdales).
- 61300-2-2 (1995) Partie 2-2: Essais – Durabilité de l'accouplement.
- 61300-2-3 (1995) Partie 2-3: Essais – Charge statique de cisaillement.
- 61300-2-4 (1995) Partie 2-4: Essais – Rétention de la fibre ou du câble.
- 61300-2-5 (1995) Partie 2-5: Essais – Torsion/rotation.
- 61300-2-6 (1995) Partie 2-6: Essais – Résistance à la traction du mécanisme de verrouillage.
- 61300-2-7 (1995) Partie 2-7: Essais – Moment de flexion.
- 61300-2-8 (1995) Partie 2-8: Essais – Secousses.
- 61300-2-9 (1995) Partie 2-9: Essais – Chocs.
- 61300-2-10 (1995) Partie 2-10: Essais – Résistance à la compression.
- 61300-2-11 (1995) Partie 2-11: Essais – Compression axiale.
- 61300-2-12 (1995) Partie 2-12: Essais – Impact.
- 61300-2-13 (1995) Partie 2-13: Essais – Accélération.
- 61300-2-14 (1997) Partie 2-14: Essais – Puissance d'entrée maximale.
- 61300-2-15 (1995) Partie 2-15: Essais – Robustesse du mécanisme de verrouillage aux efforts de torsion.
- 61300-2-16 (1995) Partie 2-16: Essais – Moisissures.
- 61300-2-17 (1995) Partie 2-17: Essais – Froid.
- 61300-2-18 (1995) Partie 2-18: Essais – Chaleur sèche – Résistance à haute température.
- 61300-2-19 (1995) Partie 2-19: Essais – Chaleur humide (essai continu).
- 61300-2-20 (1995) Partie 2-20: Essais – Séquence climatique.
- 61300-2-21 (1995) Partie 2-21: Essais – Essai cyclique composite de température et d'humidité.
- 61300-2-22 (1995) Partie 2-22: Essais – Variations de température.
- 61300-2-23 (1995) Partie 2-23: Essais – Étanchéité pour les boîtiers non pressurisés de dispositifs à fibres optiques.
- 61300-2-25 (1995) Partie 2-25: Essais – Résistance de l'étanchéité pour les boîtiers.
- 61300-2-26 (1995) Partie 2-26: Essais – Brouillard salin.
- 61300-2-27 (1995) Partie 2-27: Essais – Poussière – Ecoulement laminaire.
- 61300-2-28 (1995) Partie 2-28: Essais – Atmosphère industrielle (anhydride sulfureux).
- 61300-2-29 (1995) Partie 2-29: Essais – Basse pression atmosphérique.
- 61300-2-30 (1995) Partie 2-30: Essais – Rayonnement solaire.
- 61300-2-31 (1995) Partie 2-31: Essais – Rayonnement nucléaire.
- 61300-2-32 (1995) Partie 2-32: Essais – Résistance à la vapeur d'eau.
- 61300-2-33 (1995) Partie 2-33: Essais – Montage et démontage des boîtiers.
- 61300-2-34 (1995) Partie 2-34: Essais – Résistance aux solvants et aux fluides contaminants.
- 61300-2-35 (1995) Partie 2-35: Essais – Rotation du câble.
- 61300-2-36 (1995) Partie 2-36: Essais – Inflammabilité (risques d'incendie).
- 61300-2-37 (1995) Partie 2-37: Essais – Efforts de flexion sur le câble pour les boîtiers.
- 61300-2-38 (1995) Partie 2-38: Essais – Étanchéité pour les boîtiers pressurisés de dispositifs à fibres optiques.
- 61300-2-39 (1997) Partie 2-39: Essais – Sensibilité aux champs magnétiques externes.
- 61300-3-1 (1995) Partie 3-1: Examens et mesures – Examen visuel

(suite)

**IEC publications prepared
by Technical Committee No. 86 (continued)**

- 61300:— Fibre optic interconnecting devices and passive components – Basic test and measurement procedures.
- 61300-1 (1995) Part 1: General and guidance.
- 61300-2-1 (1995) Part 2-1: Tests – Vibration (sinusoidal).
- 61300-2-2 (1995) Part 2-2: Tests – Mating durability.
- 61300-2-3 (1995) Part 2-3: Tests – Static shear load.
- 61300-2-4 (1995) Part 2-4: Tests – Fibre/cable retention.
- 61300-2-5 (1995) Part 2-5: Tests – Torsion/twist.
- 61300-2-6 (1995) Part 2-6: Tests – Tensile strength of coupling mechanism.
- 61300-2-7 (1995) Part 2-7: Tests – Bending moment.
- 61300-2-8 (1995) Part 2-8: Tests – Bump.
- 61300-2-9 (1995) Part 2-9: Tests – Shock.
- 61300-2-10 (1995) Part 2-10: Tests – Crush resistance.
- 61300-2-11 (1995) Part 2-11: Tests – Axial compression.
- 61300-2-12 (1995) Part 2-12: Tests – Impact.
- 61300-2-13 (1995) Part 2-13: Tests – Acceleration.
- 61300-2-14 (1997) Part 2-14: Tests – Maximum input power.
- 61300-2-15 (1995) Part 2-15: Tests – Torque strength of coupling mechanism.
- 61300-2-16 (1995) Part 2-16: Tests – Mould growth.
- 61300-2-17 (1995) Part 2-17: Tests – Cold.
- 61300-2-18 (1995) Part 2-18: Tests – Dry heat – High temperature endurance.
- 61300-2-19 (1995) Part 2-19: Tests – Damp heat (steady state).
- 61300-2-20 (1995) Part 2-20: Tests – Climatic sequence.
- 61300-2-21 (1995) Part 2-21: Tests – Composite temperature-humidity composite test.
- 61300-2-22 (1995) Part 2-22: Tests – Change of temperature.
- 61300-2-23 (1995) Part 2-23: Tests – Sealing for non-pressurized closures of fibre optic devices.
- 61300-2-25 (1995) Part 2-25: Tests – Sealing endurance for closures.
- 61300-2-26 (1995) Part 2-26: Tests – Salt mist.
- 61300-2-27 (1995) Part 2-27: Tests – Dust – Laminar flow.
- 61300-2-28 (1995) Part 2-28: Tests – Industrial atmosphere (sulphur di-oxide).
- 61300-2-29 (1995) Part 2-29: Tests – Low air pressure.
- 61300-2-30 (1995) Part 2-30: Tests – Solar radiation.
- 61300-2-31 (1995) Part 2-31: Tests – Nuclear radiation.
- 61300-2-32 (1995) Part 2-32: Tests – Water vapour permeation.
- 61300-2-33 (1995) Part 2-33: Tests – Assembly and disassembly of closures.
- 61300-2-34 (1995) Part 2-34: Tests – Resistance to solvents and contaminating fluids.
- 61300-2-35 (1995) Part 2-35: Tests – Cable nutation.
- 61300-2-36 (1995) Part 2-36: Tests – Flammability (fire hazard).
- 61300-2-37 (1995) Part 2-37: Tests – Cable bending for closures.
- 61300-2-38 (1995) Part 2-38: Tests – Sealing for pressurized closures of fibre optic devices.
- 61300-2-39 (1997) Part 2-39: Tests – Susceptibility to external magnetic fields.
- 61300-3-1 (1995) Part 3-1: Examinations and measurements – Visual examination.

(continued)

**Publications de la CEI préparées
par le Comité d'Etudes n° 86 (suite)**

- 61300-3-2 (1995) Partie 3-2: Examens et mesures – Dépendance de la polarisation d'un dispositif pour fibres optiques monomodes.
- 61300-3-3 (1997) Partie 3-3: Examens et mesures – Contrôle de la variation de l'affaiblissement et de la puissance réfléchie (voies multiples).
- 61300-3-6 (1997) Partie 3-6: Puissance réfléchie.
- 61300-3-8 (1995) Partie 3-8: Examens et mesures – Immunité à l'éclairement extérieur.
- 61300-3-9 (1997) Partie 3-9: Télédiaphonie.
- 61300-3-10 (1995) Partie 3-10: Examens et mesures – Force de rétention du calibre.
- 61300-3-11 (1995) Partie 3-11: Examens et mesures – Force d'accouplement et de désaccouplement.
- 61300-3-12 (1997) Partie 3-12: Sensibilité à la polarisation de l'affaiblissement d'un composant à fibres optiques monomodes: Méthode de calcul matriciel.
- 61300-3-13 (1995) Partie 3-13: Examens et mesures – Stabilité de contrôle d'un interrupteur pour fibres optiques.
- 61300-3-14 (1995) Partie 3-14: Examens et mesures – Précision et répétabilité des positions d'affaiblissement d'un atténuateur variable.
- 61300-3-15 (1995) Partie 3-15: Mesures – Excentricité de la face terminale d'un embout poli convexe.
- 61300-3-16 (1995) Partie 3-16: Examens et mesures – Rayon de la face terminale des embouts polis sphériquement.
- 61300-3-17 (1995) Partie 3-17: Examens et mesures – Angle de la face terminale des embouts polis angulairement.
- 61300-3-18 (1995) Examens et mesures – Précision de clavetage d'un connecteur à face terminale angulaire.
- 61300-3-19 (1997) Partie 3-19: Influence de la polarisation sur la puissance réfléchie d'un composant à fibres optiques monomodes.
- 61300-3-22 (1997) Partie 3-22: Force de compression des embouts.
- 61300-3-25 (1997) Partie 3-25: Concentricité des embouts et des embouts avec fibre.
- 61300-3-26 (1997) Partie 3-26: Mesure de l'erreur d'alignement angulaire des embouts avec fibre.
- 61300-3-27 (1997) Partie 3-27: Méthode de mesure pour la localisation du trou sur une fiche de connecteur multivoies.
- 61313:— Ensembles de câbles et composants passifs à fibres optiques.
- 61313-1 (1995) Partie 1: Spécification générique: Agrément de savoir-faire.
- 61314:— Systèmes d'éclatement pour fibres et câbles optiques.
- 61314-1 (1995) Partie 1: Spécification générique.
- 61314-1-1 (1996) Partie 1-1: Spécification particulière-cadre – Catégories d'environnement 1, 2, 3, 5 et 99
- 61315:— Etalonnage des radiomètres pour sources fibrées.
- 61754:— Interfaces de connecteurs pour fibres optiques.
- 61754-1 (1996) Partie 1: Généralités et guide.
- 61754-2 (1996) Partie 2: Famille de connecteurs de type BFOC/2,5.
- 61754-3 (1996) (Publiée en langue anglaise uniquement)
- 61754-4 (1997) Partie 4: Famille de connecteurs du type SC.
- 61754-5 (1996) (Publiée en langue anglaise uniquement)
- 61754-6 (1997) Partie 6: Famille de connecteurs de type MU.
- 61754-7 (1996) (Publiée en langue anglaise uniquement)
- 61754-8 (1996) Partie 8: Famille de connecteurs de type CF08.
- 61754-9 (1996) (Publiée en langue anglaise uniquement)

**IEC publications prepared
by Technical Committee No. 86 (continued)**

- 61300-3-2 (1995) Part 3-2: Examinations and measurements – Polarization dependence of a single-mode fibre optic device.
- 61300-3-3 (1997) Part 3-3: Examinations and measurements – Monitoring change in attenuation and in return loss (multiple paths).
- 61300-3-6 (1997) Part 3-6: Return loss.
- 61300-3-8 (1995) Part 3-8: Examinations and measurements – Ambient light susceptibility.
- 61300-3-9 (1997) Part 3-9: Far-end crosstalk.
- 61300-3-10 (1995) Part 3-10: Examinations and measurements – Gauge retention force.
- 61300-3-11 (1995) Part 3-11: Examinations and measurements – Engagement and separation forces.
- 61300-3-12 (1997) Part 3-12: Polarization dependence of attenuation of a single-mode fibre optic component: Matrix calculation method.
- 61300-3-13 (1995) Part 3-13: Examinations and measurements – Control stability of a fibre optic switch.
- 61300-3-14 (1995) Part 3-14: Examinations and measurements – Accuracy and repeatability of the attenuation setting of a variable attenuator.
- 61300-3-15 (1995) Part 3-15: Measurements – Eccentricity of a convex polished ferrule endface.
- 61300-3-16 (1995) Part 3-16: Examinations and measurements – Endface radius of spherically polished ferrules.
- 61300-3-17 (1995) Part 3-17: Examinations and measurements – Endface angle of angle polished ferrules.
- 61300-3-18 (1995) Part 3-18: Examinations and measurements – Keying accuracy of an angled endface connector.
- 61300-3-19 (1997) Part 3-19: Polarization dependence of return loss of a single-mode fibre optic component.
- 61300-3-22 (1997) Part 3-22: Ferrule compression force.
- 61300-3-25 (1997) Part 3-25: Concentricity of the ferrules and ferrules with fibre installed.
- 61300-3-26 (1997) Part 3-26: Measurement of the angular misalignment between fibre and ferrules axes.
- 61300-3-27 (1997) Part 3-27: Measurement method for the hole location of a multiway connector plug.
- 61313:— Fibre optic passive components and cable assemblies.
- 61313-1 (1995) Part 1: Generic specification: Capability approval.
- 61314:— Fibre optic fan-outs.
- 61314-1 (1995) Part 1: Generic specification.
- 61314-1-1 (1996) Part 1-1: Blank detail specification – Environmental categories 1, 2, 3, 5 and 99
- 61315:— Calibration of fibre optic power meters.
- 61754:— Fibre optic connector interfaces.
- 61754-1 (1996) Part 1: General and guidance.
- 61754-2 (1996) Part 2: Type BFOC/2,5 connector family.
- 61754-3 (1996) Part 3: Type LSA connector family.
- 61754-4 (1997) Part 4: Type SC connector family.
- 61754-5 (1996) Part 5: Type MT connector family.
- 61754-6 (1997) Part 6: Type MU connector family.
- 61754-7 (1996) Part 7: Type MPO connector family.
- 61754-8 (1996) Part 8: Type CF08 connector family.
- 61754-9 (1996) Part 9: Type DS connector family.

ISBN 2-8318-3869-X



9 782831 838694

ICS 33.180.20
